

**UNITED STATES  
SECURITIES AND EXCHANGE COMMISSION**  
Washington, D.C. 20549

**FORM 8-K**

**CURRENT REPORT  
Pursuant to Section 13 or 15(d)  
of the Securities Exchange Act of 1934**

**Date of Report (Date of earliest event reported): June 10, 2025**

**RECURSION PHARMACEUTICALS, INC.**

(Exact name of registrant as specified in its charter)

**Delaware**  
(State or other jurisdiction  
of incorporation)

**001-40323**  
(Commission  
File Number)

**46-4099738**  
(I.R.S. Employer  
Identification No.)

**41 S Rio Grande Street**  
**Salt Lake City, UT 84101**  
(Address of principal executive offices) (Zip code)

**(385) 269 - 0203**  
(Registrant's telephone number, including area code)

**Not Applicable**  
(Former name or former address, if changed since last report.)

Check the appropriate box below if the Form 8-K filing is intended to simultaneously satisfy the filing obligation of the registrant under any of the following provisions:

- Written communications pursuant to Rule 425 under the Securities Act (17 CFR 230.425)
- Soliciting material pursuant to Rule 14a-12 under the Exchange Act (17 CFR 240.14a-12)
- Pre-commencement communications pursuant to Rule 14d-2(b) under the Exchange Act (17 CFR 240.14d-2(b))
- Pre-commencement communications pursuant to Rule 13e-4(c) under the Exchange Act (17 CFR 240.13e-4(c))

Securities registered pursuant to Section 12(b) of the Act:

Title of each class	Trading symbol(s)	Name of each exchange on which registered
Class A Common Stock, par value \$0.00001 per share	RXX	Nasdaq Global Select Market

Indicate by check mark whether the registrant is an emerging growth company as defined in Rule 405 of the Securities Act of 1933 or (§230.405 of this chapter) or Rule 12b-2 of the Securities Exchange Act of 1934 (§240.12b-2 of this chapter).

Emerging growth company

If an emerging growth company, indicate by check mark if the registrant has elected not to use the extended transition period for complying with any new or revised financial accounting standards provided pursuant to Section 13(a) of the Exchange Act.

**Item 2.05. Costs Associated with Exit or Disposal Activities.**

On June 10, 2025, Recursion Pharmaceuticals, Inc. (“Recursion” or the “Company”), announced a reduction in personnel and infrastructure aligned with the Company’s previously announced streamlined operating strategy and post-integration employee transitions. Based on its revised expense profile and business plan, the Company now expects its projected cash runway to extend into the fourth quarter of 2027.

These changes are expected to result in a workforce reduction of approximately 20%. The Company estimates that it will incur approximately \$11 million in charges in connection with the workforce reduction, consisting of severance payments, employee benefits, and related costs, substantially all of which the Company expects to incur in the year ending December 31, 2025. The Company now expects its cash burn excluding partnership inflows or one-time severance costs to be less than \$450 million in 2025 and less than \$390 million in 2026. The Company has the potential to receive over \$100 million in cash inflows from progress-based milestone payments from partners by the end of 2026.

The Company expects cash, cash equivalents and restricted cash for the quarter ending June 30, 2025 to be above \$500 million compared to \$509 million as of the quarter ending March 31, 2025. This estimate is based on impacts from streamlining of operations, receipt of a one-time \$28 million R&D tax credit, partnership inflows and utilization of the Company’s at-the-market offering program, offset by one-time severance payments

**Forward-Looking Statements**

This document contains information that includes or is based upon “forward-looking statements” within the meaning of the Securities Litigation Reform Act of 1995, including, without limitation, those regarding the number of employees included in Recursion’s workforce reduction, Recursion’s cash position and cash runway, cash burn in 2025 and 2026, severance costs, the amount of partnership inflows from progress-based milestone payments by the end of 2026, receipt of tax credits, and utilization of Recursion’s at-the-market offering program, and all other statements that are not historical facts. Forward-looking statements may or may not include identifying words such as “plan,” “will,” “expect,” “anticipate,” “intend,” “believe,” “potential,” “continue,” and similar terms. These statements are subject to known or unknown risks and uncertainties that could cause actual results to differ materially from those expressed or implied in such statements, including but not limited to: challenges inherent in pharmaceutical research and development, including our ability to obtain financing for development activities and other corporate purposes; the success of our collaboration activities; our ability to attract, motivate, and retain key employees and manage our growth; inflation and other macroeconomic issues; and other risks and uncertainties such as those described under the heading “Risk Factors” in our filings with the U.S. Securities and Exchange Commission, including our most recent Annual Report on Form 10-K and subsequent Quarterly Reports on Form 10-Q. All forward-looking statements are based on management’s current estimates, projections, and assumptions, and Recursion undertakes no obligation to correct or update any such statements, whether as a result of new information, future developments, or otherwise, except to the extent required by applicable law.

**Non-GAAP Financial Measures**

To supplement the Company’s financial statements prepared in accordance with U. S. GAAP, the Company monitors and considers cash burn, which is a non-GAAP financial measure. The Company defines cash burn as the net cash used in operating activities, excluding non-ordinary course transaction costs, plus partnership cash inflows and purchases of property and equipment. This non-GAAP financial measure is not based on any standardized methodology prescribed by U.S. GAAP and is not necessarily comparable to similarly-titled measures presented by other companies. The Company believes cash burn

to be a liquidity measure that provides useful information to management and investors about the amount of cash consumed by the operations of the business, including purchases of property and equipment. A limitation of using this non-U.S. GAAP measure is that cash burn does not represent the total change in cash and cash equivalents for the period because it excludes cash provided by or used for other investing and financing activities. In addition, it is important to note that other companies, including companies in Recursion's industry, may not use cash burn, may calculate cash burn in a different manner than Recursion does or may use other financial measures to evaluate their performance, all of which could reduce the usefulness of cash burn as a comparative measure. Because of these limitations, cash burn should not be considered in isolation from, or as a substitute for, financial information prepared in accordance with U.S. GAAP. With respect to the expected cash burn for 2025, certain items that affect the calculation of the GAAP financial measure for net cash used by operating activities are not available on a forward-looking basis because such items cannot be reasonably calculated without unreasonable effort due to the unpredictability of the amounts and timing of events affecting the items the Company excludes from cash burn. Consequently, the Company is unable to provide a reconciliation of net cash used in operating activities to cash burn for the Company's 2025 cash burn guidance.

**Item 7.01. Regulation FD Disclosure.**

On June 10, 2025, the Company released an updated corporate presentation to the investor section of the Company's website. A copy of the presentation is attached hereto as Exhibit 99.1 to this Current Report on Form 8-K and incorporated into this Item 7.01 by reference.

The information furnished pursuant to 7.01 (including Exhibit 99.1) on this Form 8-K, shall not be deemed "filed" for purposes of Section 18 of the Securities Exchange Act of 1934, as amended (the "Exchange Act"), or otherwise subject to the liabilities of that section, nor shall it be deemed incorporated by reference into any other filing under the Securities Act of 1933, as amended, or the Exchange Act, except as expressly set forth by specific reference in such a filing.

**Item 9.01. Financial Statements and Exhibits.**

(d) Exhibits

<u>Exhibit Number</u>	<u>Description</u>
99.1	<a href="#">Company presentation dated June 10, 2025.</a>
104	Cover Page Interactive Data File (embedded within the Inline XBRL document)

**SIGNATURES**

Pursuant to the requirements of the Securities Exchange Act of 1934, the registrant has duly caused this report to be signed on its behalf by the undersigned hereunto duly authorized on June 10, 2025.

RECURSION PHARMACEUTICALS, INC.

By: /s/ Christopher Gibson  
Christopher Gibson  
Chief Executive Officer

# Corporate Deck June 2025



# Important Information

This presentation of Recursion Pharmaceuticals, Inc. ("Recursion," "we," "us," or "our") and any accompanying discussion contain statements that are not historical facts and may be considered forward-looking statements under federal securities laws and may be identified by words such as "anticipates," "believes," "estimates," "expects," "intends," "plans," "potential," "predicts," "projects," "seeks," "should," "will," or words of similar meaning and include, but are not limited to, statements regarding Recursion's ability to demonstrate the potential of technology-driven approaches to increase speed, quality and the scalability of drug discovery; the potential outlook for programs being prioritized and deprioritized; Recursion's future as a leader in TechBio and ability to deliver better treatments to patients faster; Recursion's OS industrializing first- and best-in-class drug discovery; the occurrence or realization of potential milestones; current and future preclinical and clinical studies, including timelines for enrollment in studies, data readouts, and progression toward IND-enabling and other potential studies; advancements of its pipeline, partnerships, and data strategies; the potential size of the market opportunity for our drug candidates; outcomes and benefits from licenses, partnerships and collaborations, including option exercises by partners and the amount and timing of potential milestone payments; the initiation, timing, progress, results, and cost of our research and development programs; advancements of our Recursion OS; the potential for additional partnerships; our ability to identify viable new drug candidates for clinical development and the accelerating rate at which we expect to identify such candidates including our ability to leverage the datasets acquired through the license agreement into increased machine learning capabilities and accelerate clinical trial enrollment; Recursion's cash burn, cash position and cash runway; the completion of core integration plans and the results of the business combination with Exscientia; and many others.

Other important factors and information are contained in Recursion's most recent Annual Report on Form 10-K, Quarterly Report on Form 10-Q, and the Company's other filings with the U.S. Securities and Exchange Commission (the "SEC"), which can be accessed at <https://ir.recursion.com>, or [www.sec.gov](http://www.sec.gov). All forward-looking statements are qualified by these cautionary statements and apply only as of the date they are made. Recursion does not undertake any obligation to update any forward-looking statement, whether as a result of new information, future events or otherwise.

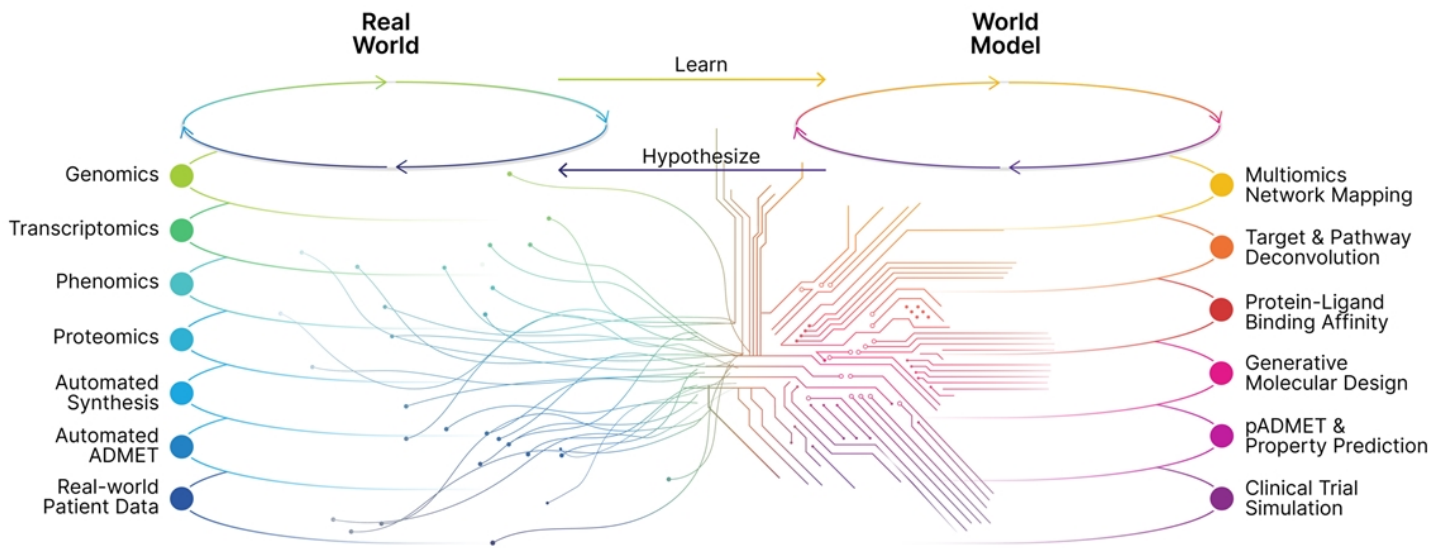
Certain information contained in this presentation relates to or is based on studies, publications, surveys and other data obtained from third-party sources and the company's own internal estimates and research. While the company believes these third-party sources to be reliable as of the date of this presentation, it has not independently verified, and makes no representation as to the adequacy, fairness, accuracy or completeness of, any information obtained from third-party sources. In addition, all of the market data included in this presentation involves a number of assumptions and limitations, and there can be no guarantee as to the accuracy or reliability of such assumptions. Finally, while the company believes its own internal research is reliable, such research has not been verified by any independent source. Information contained in, or that can be accessed through our website is not a part of and is not incorporated into this presentation.

Cross-trial or cross-candidate comparisons against other clinical trials and other drug candidates are not based on head-to-head studies and are presented for informational purposes; comparisons are based on publicly available information for other clinical trials and other drug candidates.

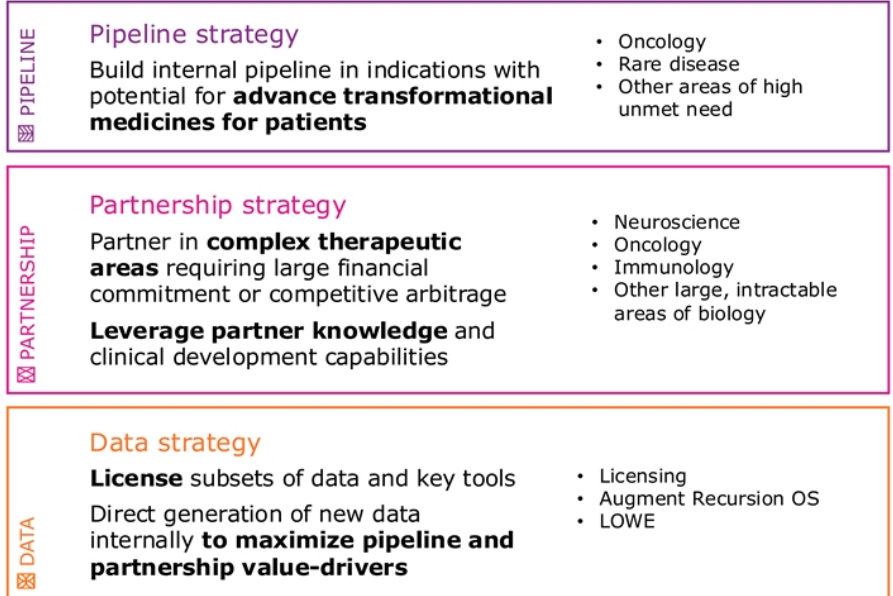
Any non-Recursion logos or trademarks included herein are the property of the owners thereof and are used for reference purposes only.



# Full-stack Recursion OS is industrializing first-in-class & best-in-class drug discovery



# We harness value from the Recursion OS with a multi-pronged capital efficient business strategy



## Pipeline: Advancing 5+ high-potential programs across oncology and rare disease

	Candidate	Target	BIC/FIC	Indication	Preclinical	IND-Enabling	Phase 1 / 2	Phase 3
ONCOLOGY	REC-617	<b>CDK7</b>	BIC	Advanced solid tumors <sup>1</sup>	<i>ELUCIDATE</i>			
	REC-1245	<b>RBM39</b>	FIC	Biomarker-enriched solid tumors & lymphoma	<i>DAHLIA</i>			
	REC-3565	<b>MALT1</b>	BIC	B-cell malignancies	<i>EXCELERIZE</i>			
	REC-7735	<b>PI3Ka H1047R</b>	BIC	Breast cancer				
RARE	REC-4881	<b>MEK1/2</b>	FIC	Familial adenomatous polyposis (FAP)	<i>TUPELO</i>			
	REV102 <sup>2</sup>	<b>ENPP1</b>	FIC	Hypophosphatasia (HPP)				
	REC-4539 – strategic pause <sup>3</sup>	<b>LSD1</b>	BIC	Solid tumors (e.g., SCLC)	<i>ENLYGHT</i>			

1. Includes non-small cell lung cancer (NSCLC), colorectal cancer, breast cancer, pancreatic cancer, ovarian cancer, head and neck cancer

2. Joint Venture with Rallybio

3. Strategic pause to ensure a competitive Target Product Profile

# Pharma partnerships with approximately \$455M<sup>1</sup> earned to date and potential to receive more than \$20B in additional milestones



Recursion OS



## NEUROSCIENCE & ONCOLOGY

- **\$150M upfront | Up to \$300M per program for 40 programs**
- Identifying novel targets and small molecules, with the potential to advance up to 40 programs in neuroscience & a GI oncology indication



## ONCOLOGY & IMMUNOLOGY

- **\$100M upfront | >\$5B total value**
- Focusing on up to 15 novel small molecule candidates across oncology & immunology



## ONCOLOGY

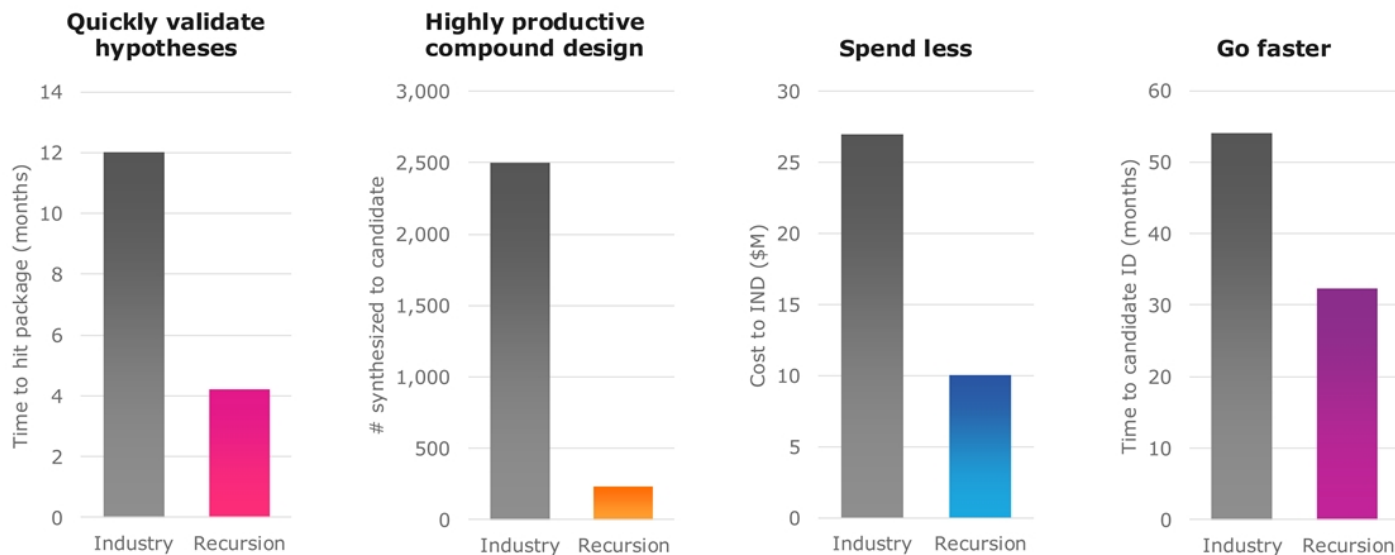
- **\$80M upfront + investment | ~\$1.5B total value**
- Focusing on up to seven programs in oncology



## ONCOLOGY & IMMUNOLOGY

- **\$20M upfront | >\$650M deal value**
- Focused on three projects in oncology & immunology

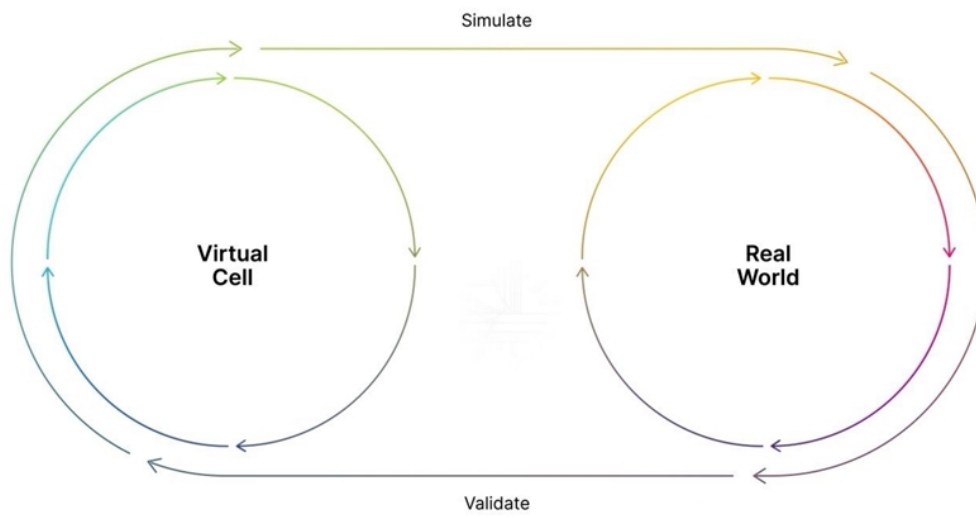
# Recursion OS moves medicines to clinic faster and at a lower cost



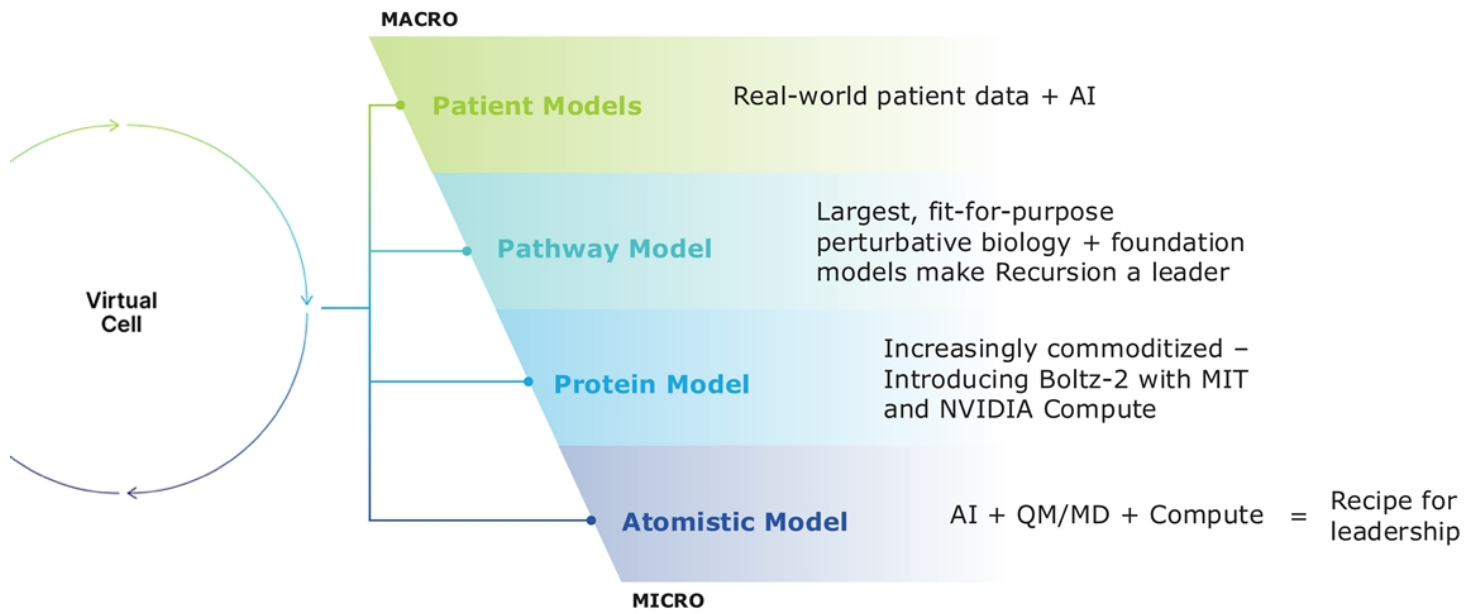
7 (Far Left): Time from hypothesis screening to validated hit package for legacy Recursion programs. (Center Left): Legacy Exscientia compounds synthesized from hit to candidate ID. (Center Right): Total spend from hypothesis screening to the completion of IND-enabling studies for legacy Recursion novel chemical entity (NCE) programs that advanced to clinical trials. The cost to IND has been inflation-adjusted using the US Consumer Price Index (CPI) (Far Right). Time to validated lead is the average of >280 legacy Recursion programs since late 2017 through 2024. Industry data adapted from Paul, et al., Nature Reviews Drug Discovery (2010) 9, 203–214



# Full-stack Recursion OS is industrializing first-in-class & best-in-class drug discovery



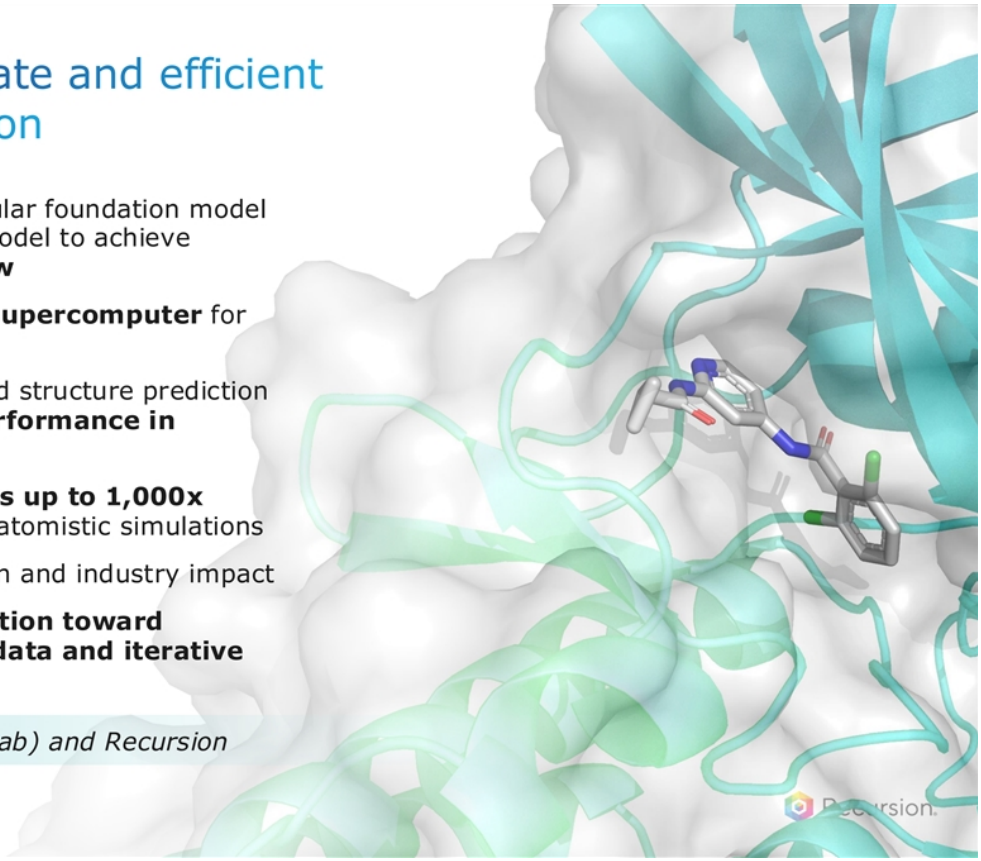
# The race to accurately simulate biology at scale



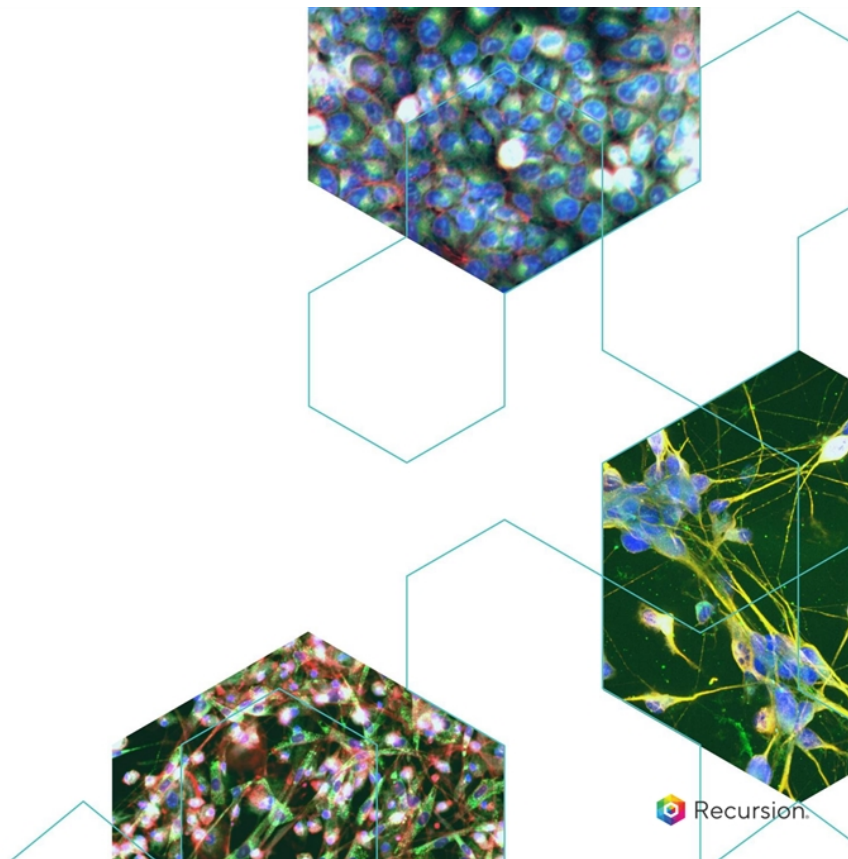
## Boltz-2: Towards accurate and efficient binding affinity prediction

- **Boltz-2:** Next-generation biomolecular foundation model allowing for integration of protein model to achieve **complete biological systems view**
- Powered by **Recursion's NVIDIA supercomputer** for training and validation
- Extends interaction modeling beyond structure prediction and **achieves state-of-the-art performance in binding affinity prediction**
- Approaching FEP accuracy at **speeds up to 1,000x faster** than currently available FEP atomistic simulations
- **Open-source** to accelerate adoption and industry impact
- Accelerates the **shift of value creation toward modular platforms, proprietary data and iterative dry/wet lab loops**

*Developed by MIT (Regina Barzilay's lab) and Recursion*



# Pipeline



## Pipeline: Advancing 5+ high-potential programs across oncology and rare disease

	Candidate	Target	BIC/FIC	Indication	Preclinical	IND-Enabling	Phase 1 / 2	Phase 3
ONCOLOGY	REC-617	<b>CDK7</b>	BIC	Advanced solid tumors <sup>1</sup>	<i>ELUCIDATE</i>			
	REC-1245	<b>RBM39</b>	FIC	Biomarker-enriched solid tumors & lymphoma	<i>DAHLIA</i>			
	REC-3565	<b>MALT1</b>	BIC	B-cell malignancies	<i>EXCELERIZE</i>			
	REC-7735	<b>PI3Kα H1047R</b>	BIC	Breast cancer				
RARE	REC-4881	<b>MEK1/2</b>	FIC	Familial adenomatous polyposis (FAP)	<i>TUPELO</i>			
	REV102 <sup>2</sup>	<b>ENPP1</b>	FIC	Hypophosphatasia (HPP)				
	REC-4539 – strategic pause <sup>3</sup>	<b>LSD1</b>	BIC	Solid tumors (e.g., SCLC)	<i>ENLYGHT</i>			

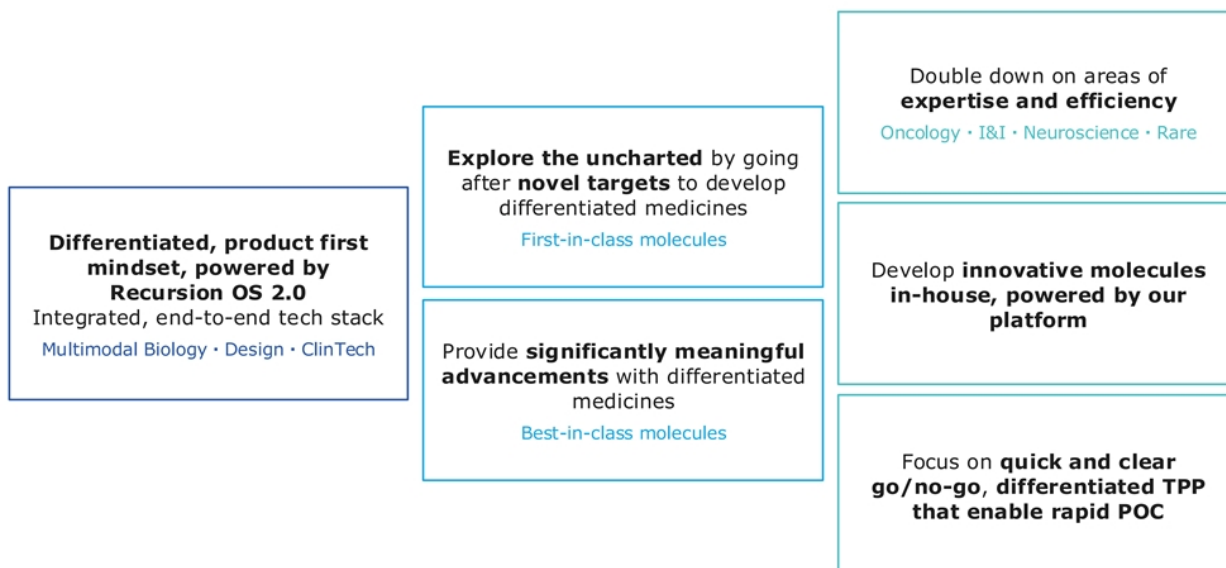
1. Includes non-small cell lung cancer (NSCLC), colorectal cancer, breast cancer, pancreatic cancer, ovarian cancer, head and neck cancer

2. Joint Venture with Rallybio

3. Strategic pause to ensure a competitive Target Product Profile

# Targeted, differentiated portfolio strategy

Powered by the Recursion OS 2.0 platform



# Sharpening our focus: Pipeline programs powered by Recursion OS

<p><b>REC-617   CDK7</b> Ph 1/2 Mono; Ph 1 Combo 1H25 Solid tumors<sup>1</sup></p> <p>Optimized PK/PD with potential for improved efficacy and safety via a wider therapeutic index</p> <p>~185,000 addressable patients</p>	<p><b>REC-1245   RBM39</b> Ph 1 Solid tumors<sup>2</sup>, Lymphoma</p> <p>Phenotypic insight to identify novel MOA to modulate DDR biology</p> <p>~100,000 addressable patients</p>	<p><b>REC-4881   MEK1/2</b> Ph 1b/2 Familial adenomatous polyposis (FAP)</p> <p>Phenotypic insight on MEK1/2 inhibition for APC-mutant FAP</p> <p>~50,000 addressable patients</p>
<p><b>REC-3565   MALT1</b> Ph 1 B cell malignancies</p> <p>Potential for less UGT1A1 inhibition and off-target AEs</p> <p>~41,000 addressable patients</p>	<p><b>REC-7735   PI3K<math>\alpha</math> H1047R</b> IND-enabling 2H25 Breast Cancer</p> <p>Highly selective with potential for improved efficacy and safety via a wider therapeutic index</p> <p>~11,000 addressable patients</p>	<p><b>REV102<sup>3</sup>   ENPP1i</b> IND-enabling Hypophosphatasia (HPP)</p> <p>Oral, highly selective &amp; potent, suitable for lifetime dosing</p> <p>~7,800<sup>4</sup> addressable patients</p>
<p><b>REC-4539   LSD1:</b> Precision designed for reversibility and CNS penetration <i>Strategic pause to ensure a competitive Target Product Profile</i></p>		

Note: Addressable patient populations estimate based on annual US+EU5 and currently identified indications

1. Includes ovarian cancer, breast cancer, non-small cell lung cancer (NSCLC), colorectal cancer, pancreatic cancer, head and neck cancer
2. Biomarker-enriched
3. Joint Venture with Rallybio
4. Diagnosed patients

# REC-617 (CDK7 inhibitor): Summary & next steps

Monotherapy dose escalation ongoing with update 2H25; Combination study to initiate 1H25

Recursion OS Insight

Preclinical Validation

Clinical Development

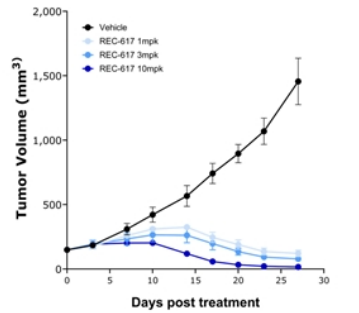
Target affinity and selectivity	CDK IC <sub>50</sub> (nM)	
	CDK family selectivity	
Cell potency	HCC70 (breast cancer) IC <sub>50</sub> (nM)	
	OVCAR-3 (ovarian cancer) IC <sub>50</sub> (nM)	
Safety and metabolism	HERG IC <sub>50</sub> (µM)	
	Human microsome Clint µL/min/mg	
	Human hep Clint µL/min/10 <sup>6</sup> cells	
ADME	Caco-2 A2B (efflux) 10 <sup>6</sup> cm/s	
	pH 7.4 µg/mL	
	F % (p.o.)	

**136 novel compounds**  
to Candidate ID in **<12 months**

## Designed to optimize PK/PD and maximize potential therapeutic index

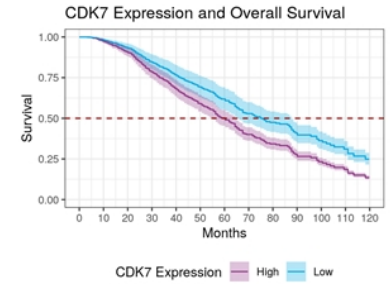
- 2D ML to optimize ADME for high permeability and low efflux
- 3D ML maximized key pocket interactions & selectivity against related kinases

CDX Model: OVCAR<sup>1</sup>



## Potent tumor regression with REC-617 treatment

- <10 hours of exposure above IC<sub>80</sub> to optimize benefit-risk
- No body weight loss



## Human genetics data and cell line screens to validate new indications

- Causal AI approach to determine impact of CDK7 inhibition on survival
- 2 new potential indications identified

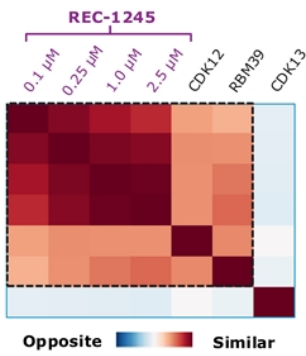
# REC-1245 (RBM39 degrader): Summary & next steps

Monotherapy dose escalation ongoing with preliminary update 1H26

Recursion OS Insight

Preclinical Validation

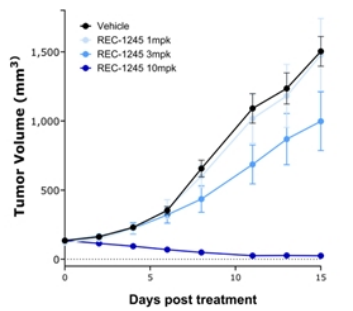
Clinical Development



## Identified through phenotypic discovery platform

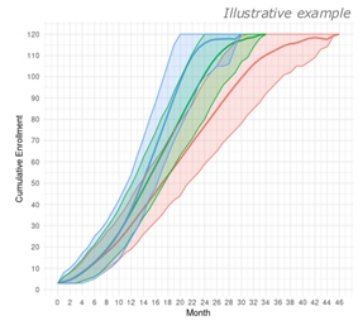
- Novel target mimicking CDK12 loss
- Hypothesized to modulate DDR

## CDX Model: OVK18<sup>1</sup>



## Compelling efficacy and PK/PD with REC-1245 treatment

- REC-1245 shows significant monotherapy regressions
- Dose-dependent antitumor activity correlates with PD



## Ongoing ClinTech work to accelerate enrollment and identify new indications

- Using RWD to identify quality sites for faster enrollment
- Ongoing causal AI modeling to explore potential additional indications

1. N=8 mice per group in TV portion. REC-1245 administered BID PO. PD evaluated after 5 days BID oral of REC-1245 at doses noted; N=3 mice per group in PD portion.

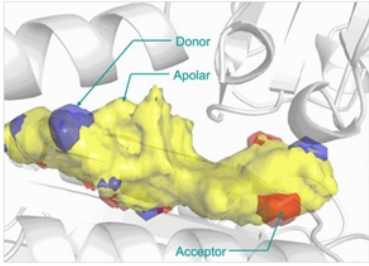
# REC-3565 (MALT1 inhibitor): Summary & next steps

Monotherapy dose escalation ongoing with preliminary update 2H26

Recursion OS Insight

Preclinical Validation

Clinical Development

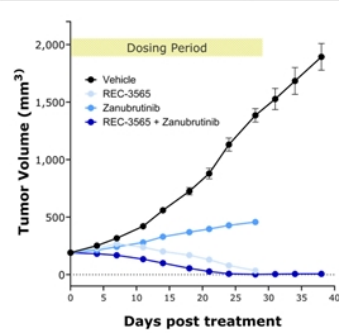


344 novel compounds  
to Candidate ID

**Designed to deliver balanced compound with improved safety (UGT1A1) and efficacy**

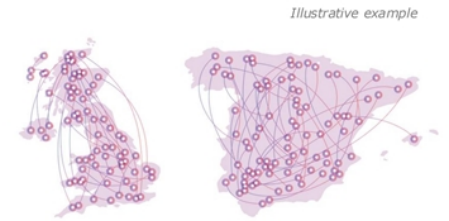
- Leveraged molecular dynamics & hotspot analysis

CDX Model: OCI-Ly10<sup>1</sup>



**Single-agent and synergistic activity**

- Single agent showed tumor growth regression
- 70% of mice in combo arm had no palpable tumors 10-days after last dose



**RWD to combat competition for trial enrollment**

- Advanced analytics for strategic site recommendations and patient targeting
- >50 new potential sites identified in UK and Spain

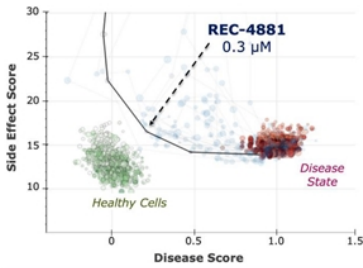
# REC-4881 (MEK1/2 inhibitor): Summary & next steps

Phase 2 dose expansion ongoing with update 2H25

Recursion OS Insight

Preclinical Validation

Clinical Development

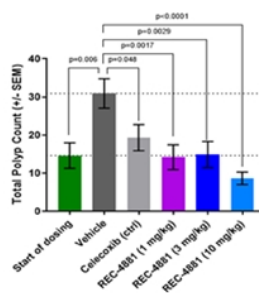


REC-4881 suppresses disease-inducing effects of APC mutations

## Identified through phenotypic discovery platform

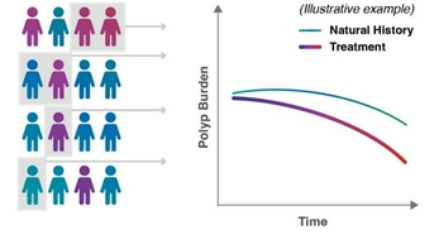
- Novel therapeutic mechanism for FAP
- Targeted strategy selectively blocking ERK activation (MAPK pathway) to suppress disease progression

## In Vivo Model: APC<sup>min/+</sup> 1



## Significant reduction in polyp count, outperforming celecoxib

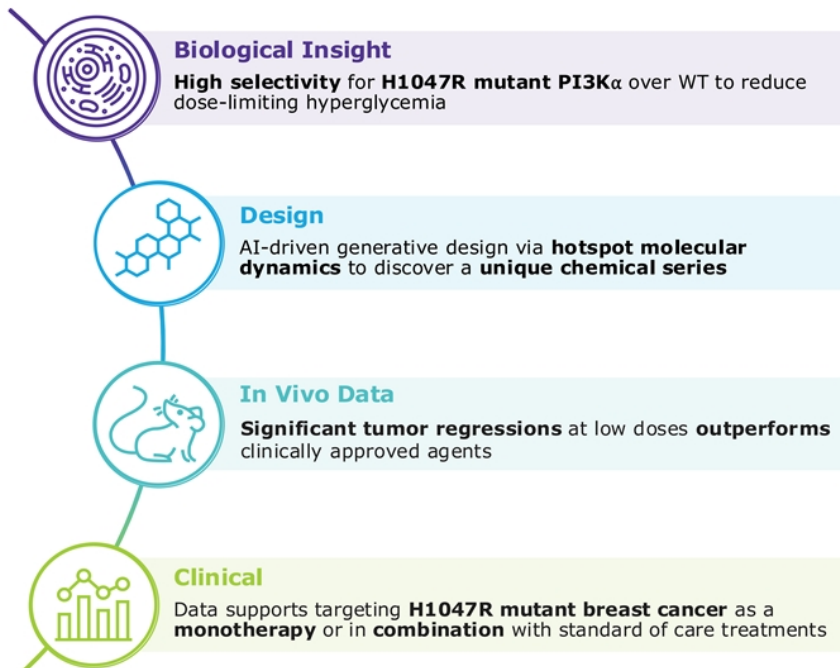
- Decreases both polyp number and pre-cancerous adenoma percentage, unlike celecoxib<sup>2</sup>



## RWE to benchmark clinical trial efficacy

- Evaluating natural history data for FAP patients undergoing routine care
- Providing frame of reference for polyp burden compared with open label REC-4881 trial

# REC-7735: PI3K $\alpha$ H1047R – Summary & next steps



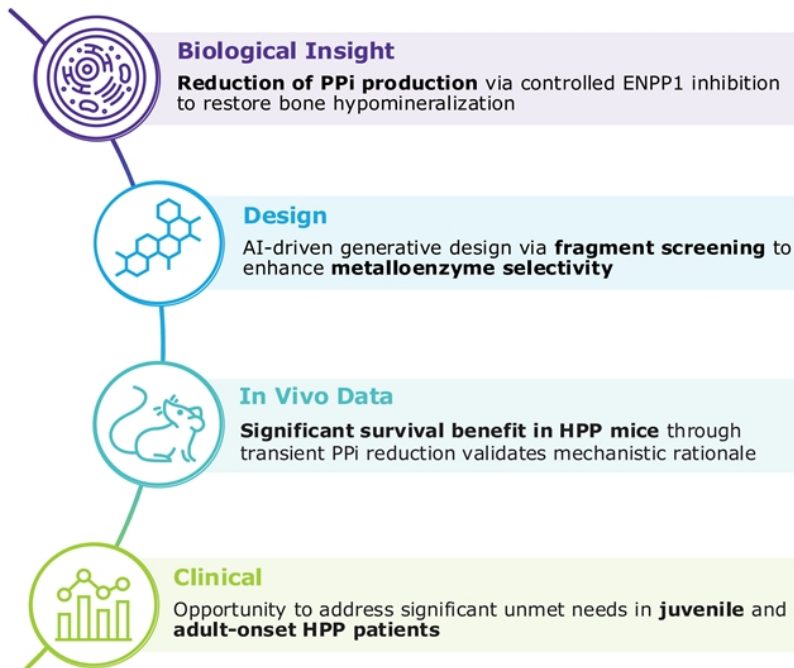
## REC-7735 Target Profile

- Potential **best-in-class** PI3K $\alpha$  H1047R inhibitor
- **>100-fold selective** against WT PI3K $\alpha$
- **No significant** in-vitro safety concerns, superior BSEP, off-target & liver spheroid profile **versus competitors**
- **Highly CNS penetrant** with **low-risk** of dose-limiting AEs

## What's Next

- Development candidate nomination **2H25**

# REV102: ENPP1 – Next steps



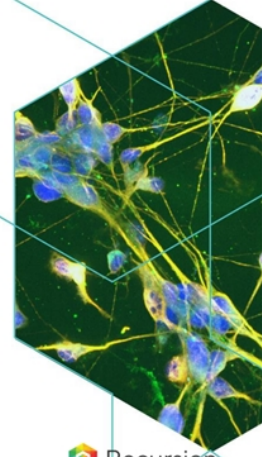
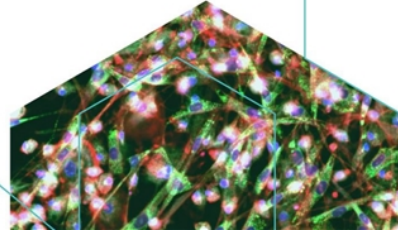
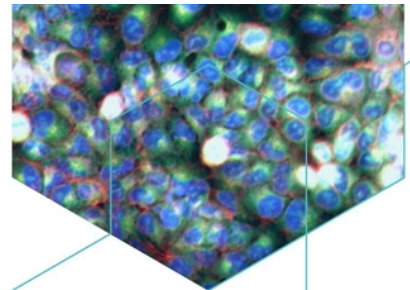
## REV102 Target Profile

- Potential **first-in-class** ENPP1 inhibitor
- **High oral bioavailability** supports QD or BID dosing
- **No kinases** inhibited >70% at 10  $\mu$ M
- No significant in vitro safety liabilities identified

## What's Next

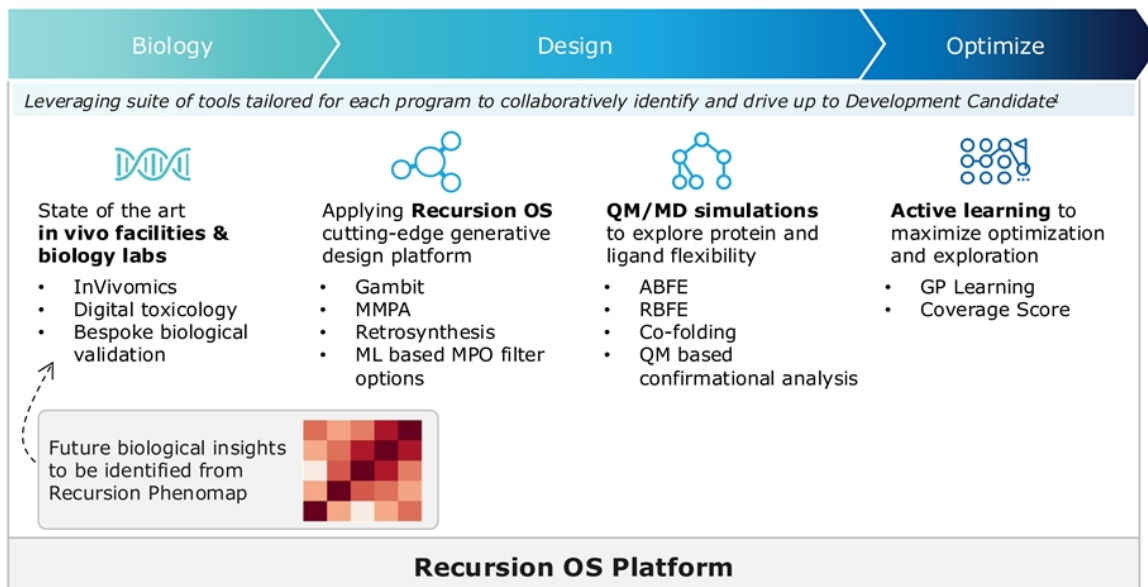
- IND-enabling studies **ongoing**
- **Phase 1 initiation 2H26**

# Partnered Programs



 Recursion

# Sanofi collaboration advancing novel targets in I&I and oncology – 4 milestones achieved, multiple additional expected

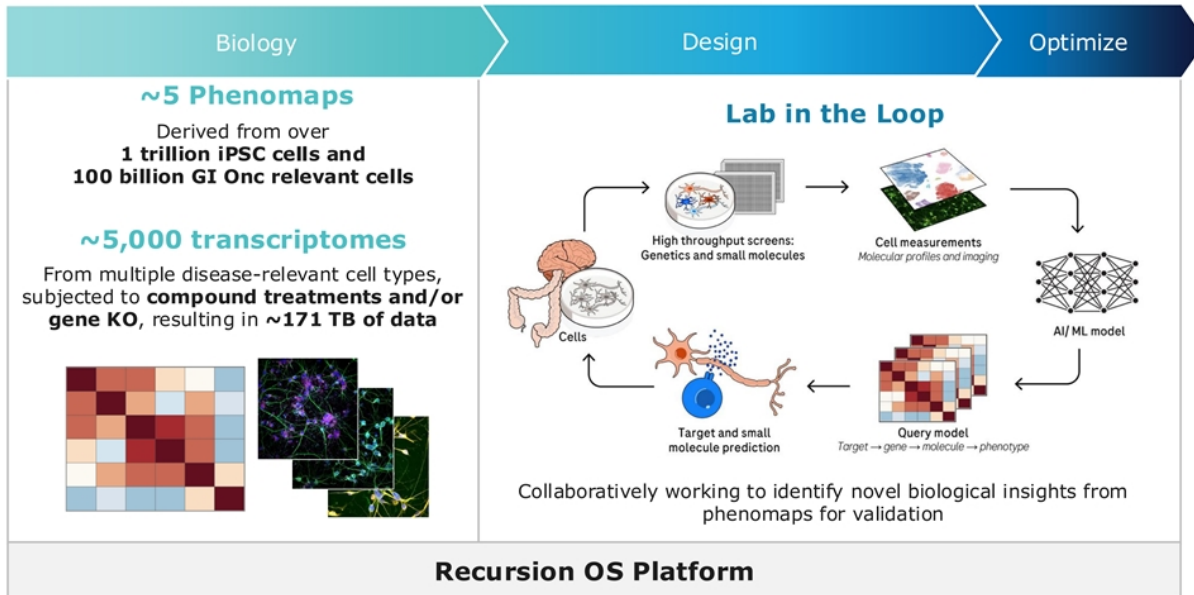


**4** Program milestones achieved to date

### What's next

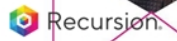
- **Complete first development candidates** and advance programs into the clinic
- Continue to **advance broad pipeline** of first-in-class and best-in-class medicines with Recursion OS

# Roche and Genentech collaboration within neuroscience and GI oncology indication – unbiased novel biological insights to programs



- What's next**
- **Additional phenomap** builds ongoing
  - Leveraging Recursion OS and collaborating with Roche and Genentech to **identify new programs** in a GI oncology indication & neuroscience

# Financial Update



# Streamlining operations to advance platform, pipeline & partnerships

## Cash, cash equivalents and restricted cash

- \$509.2 million in cash<sup>1</sup> as of March 31, 2025
- Expect to end 2Q25 with over \$500 million in cash<sup>1</sup>

## Expected cash burn<sup>2</sup>

- Expected 2025 cash burn<sup>2</sup> of <\$450 million
- Expected 2026 cash burn<sup>2</sup> of <\$390 million

## Partnership inflows<sup>3</sup>

- \$7 million Sanofi milestone payment achieved in 2Q25
- Potential for over \$100 million in partnership inflows by end of 2026<sup>3</sup>

Expected cash runway extended into the fourth quarter of 2027

1. Cash, cash equivalents and restricted cash

2. Cash burn, defined as operating cash flow less capital expenditures, excluding partnership and financing inflows, transaction expenses and severance

3. Risk-adjusted cash inflows from partnerships included in estimated cash runway

# Looking Forward

# Solidifying Recursion's leadership in TechBio

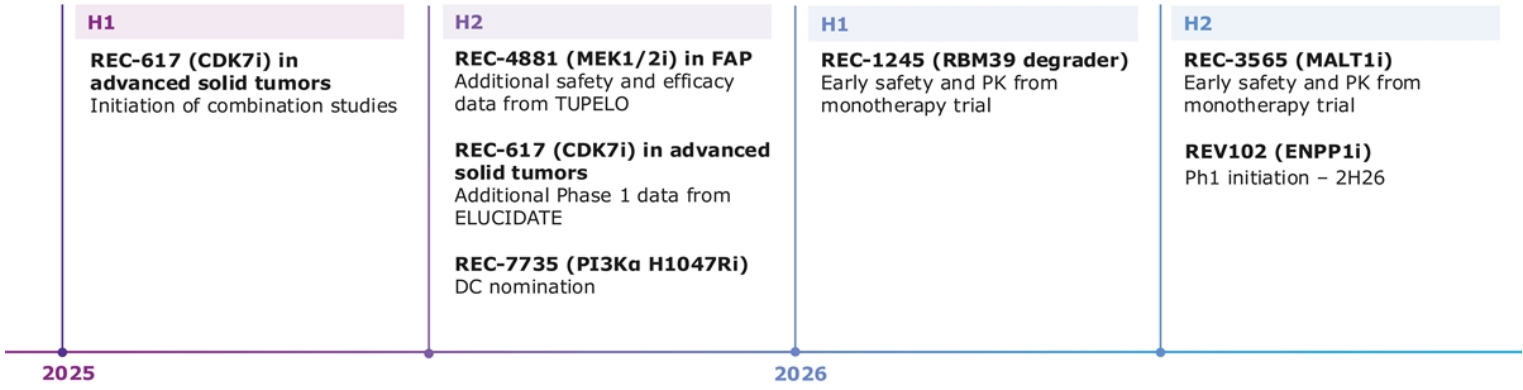
## Our sustainable and continued growth plan

- **Commitment to internal pipeline** – Strong investment behind more focused pipeline
- **Execution on partnerships** – Fully resourced to deliver on programs and achieve milestones
- **Transforming drug discovery and development** – Expanding leadership in AI-based drug discovery and automation by advancing differentiated molecules
- **Increasing efficiency** – Our scale and technologies continue to allow us to do more with less
- **Investment in Recursion OS** – Integrated end-to-end tech stack driving better decision making



# Internal and external pipeline momentum

FY 2025 and 2026 upcoming pipeline catalysts



## Partnership Catalysts

Potential for **additional phenomap options**

Potential for **multiple new project initiations**

Potential for **multiple programs optioned** by partners



Genentech

Merck KGaA  
Darmstadt, Germany

sanofi





Recursion.